



7" W 1024 x 600 TFT + Pap Touch
KIT FOR UP Board
KIT-07X0ETTX30003U1

Assembly guide

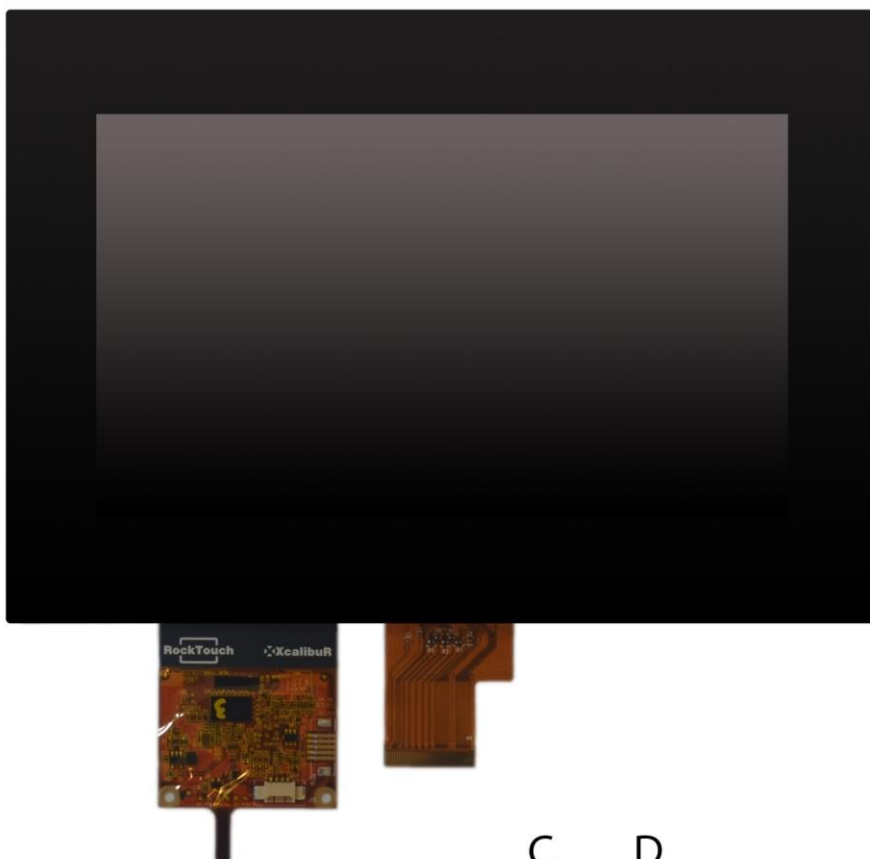
Rev 01
3 May 2016

Record of Revision

Version and Date	Page	Old Description	New Description	Remark
0_1 May 03 2016	All	First Edition Specification		

Kit Components

A



B



C



D



E



	P/N	Description
A	DSAM-07X0ETTX30003U1	1024x600 TFT lcd with LVDS interface & ROCKTOUCH 7" W 3 mm USB Pcap Touch Screen
B	TFC_UP2DSI	FutureLabs DSI-LVDS board
C	CB_UP2USB8	USB Bridge Cable
D	CBL-41-03-100-A	DSI Cable 41 pins
E	/	4 bolts, 4 nuts, 4 screw

Package KIT-07X0ETTX30003U1



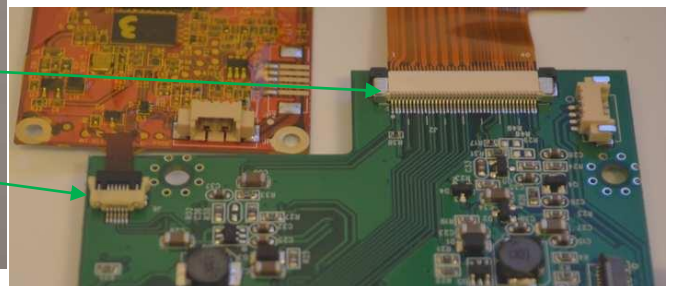
Assembly Procedure



Bring the Display with touch and align in front of the DSI converter board, open the two ZIF connector on the DSI board



Plug in the 4 pins Touch FPC into the 4 pins ZIF connector and then plug in the 40 pins Display FPC into the ZIF connector on the DSI board, and lock the connectors gently, make sure the FPC are correctly aligned

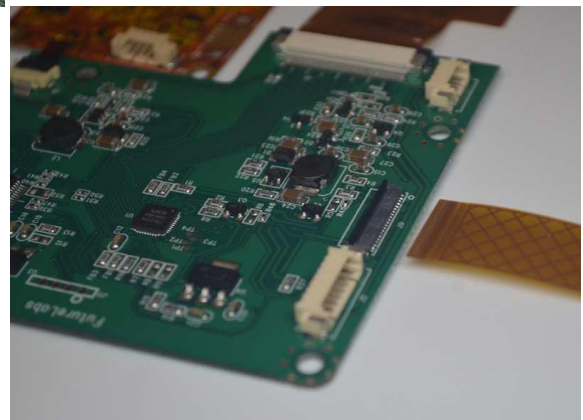


Assembly Procedure

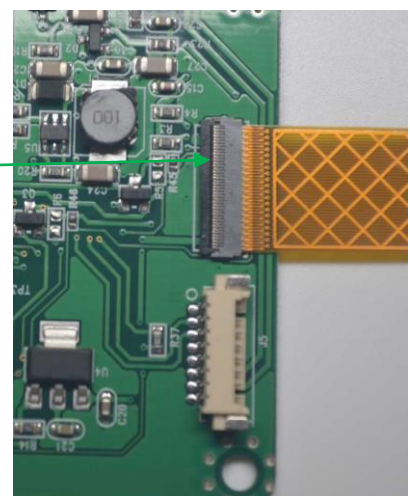


Open the DSI 41 Pin connector from the back side

Then plug in the DSI Cable, make sure the contacts are on the TOP side



After you plug in the DSI cable your solution will look like the following picture



Assembly Procedure



Plug in the USB bridge Cable on the 10 pin side on the DSI board



Now you can rotate the solution upside down

Assembly Procedure



Bring the board on the Back side of the LCD, and fix the 4 spacer with the 4 nuts

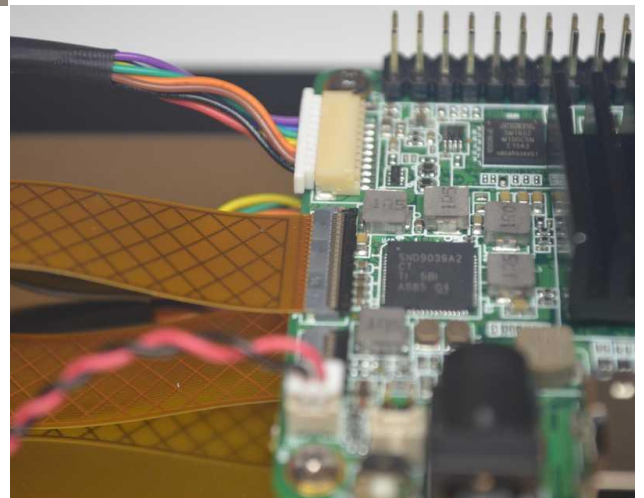
Put on top the UP board and fix with the remain 4 bolts



Now Plug In the USB Cable and the DSI Cable over the UP board connectors



Make sure cables are plug in correctly



Assembly Procedure

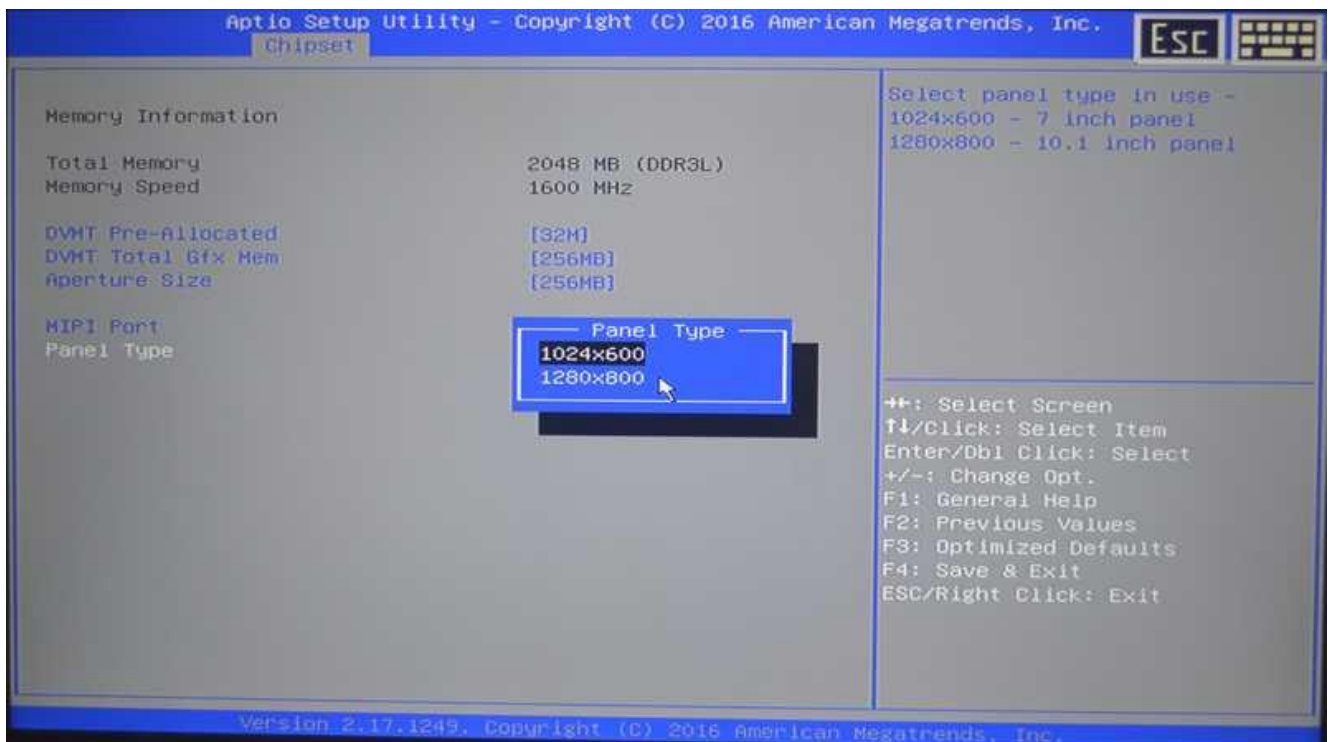


Now turn the display on the front side, and put back the board on the bottom. Connect the HDMI cable to an External LCD monitor and Plug in the power supply on the UP board

Once the UP logo will show on the Monitor please press DEL and you will enter into the BIOS, once you are into the BIOS go on Chipset menu North bridge and select:

MIPI Port: Enable

Panel Type: 1024x600 for 7'W



Assembly Procedure

Select Save Changes and Reset, now you can disconnect the HDMI cable from UP board.



Done! You will see the panel light up and touch will work out of the box.

For the best Touch behavior please connect the LCD metal Frame to the board Ground.